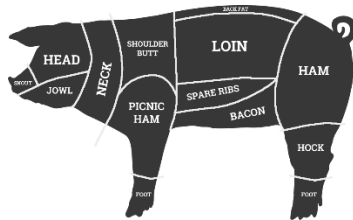


# Marketplace

As of April 23, 2018

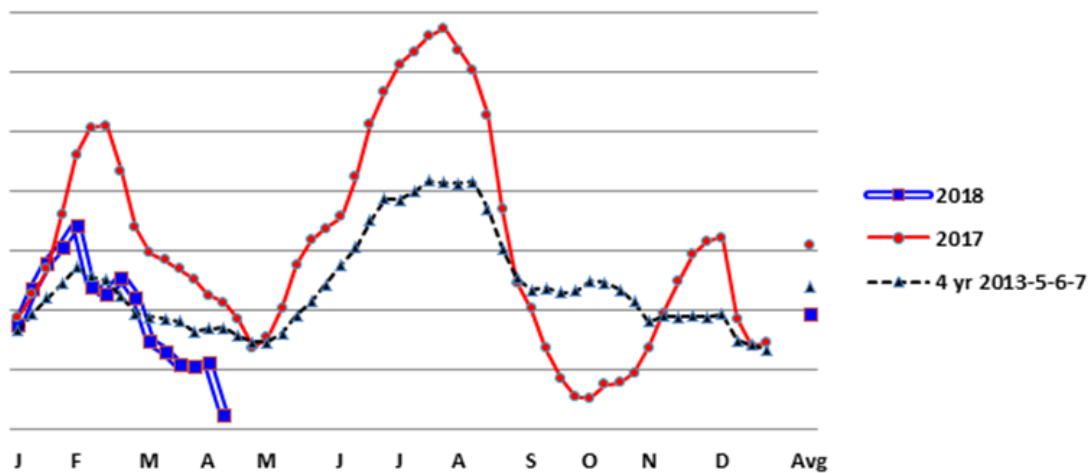
## Protein Updates



### PORK

- The belly market has come down in the past, 2 weeks anticipating it will start going back up over the next 2-3 weeks

### Bellies – 4 year historical trend



## *Produce Updates*

### APPLES & PEARS

- Local varieties are starting to wind down with only a few more weeks left on certain varieties.

#### Available Varieties - Apples:

Honeycrisp (ON)  
Granny Smith (USA)  
Royal Gala (ON & USA)  
SweeTango (NS)

JAZZ (Washington New Crop)  
Macintosh (ON)  
Red Delicious (ON & USA)  
Golden Delicious (ON & USA)

Pink Lady (USA)

#### Available varieties - Pears:

Anjou

Bartlett (SA & ARG)

Bosc

### GRAPES

- We're into storage grapes on all varieties out of Chile, so expect prices to rise and to remain high until Mexico starts in Mid-May.

### KIWI

- Supplies remain good but prices are going to be high for the next few weeks. We will still have Italian kiwi until the end of April and gold kiwi from Chile is available as well. The first arrivals from New Zealand will be here by the end of May.

### MANGOES

- We are now into Mexican Tommy mangoes. All sizes are available and eating quality is great. Supply is good and the market is stable.

### BANANAS

- Bananas are back to where they should be; the market is stable and so are shipments. We are 2 weeks away from launching more ripening rooms and more programs - stay tuned!

### PINEAPPLES

- Sizing is very limited on pineapples. We have an abundance of size 6 and all other sizes are tight. This should open up in May as markets look to drop.

### AVOCADOS

- The market pricing should stay stable from here through Cinco de Mayo. 14/6 bags are still the best buy. We also have 21/4ct organic avocados available.

### ORANGES

- California is still peaking on large sizes (36s & 40s). Ask your sales rep for promotional pricing. Cara Cara is a nice addition for citrus promotions, flavour is excellent!



### JUICE ORANGES

- Florida Valencia's are in and the quality is excellent. Prices are starting to trend upwards.

### MINNEOLAS

- We have our final inventories of Minneolas in stock for the season

### CLEMENTINES

- W. Murcotts have been coming in and going out fast as the quality is excellent. We are also bagging these if you need. We expect to have some for two to three more weeks and the deal will be done. The first load of Honey Murcotts from Egypt came and went. We only have one more load; prebook with your sales rep to secure yours.

### LEMONS

- We now have both US and Spanish fruit available with Argentina lemons on route; look for them in the coming weeks. South Africa will begin to ship in the coming weeks as well. The market looks like it will be much easier this year than in the past.

### LIMES

- We are still into our Mexican crop and prices remain high as supply is tight. Markets dropped slightly last week, but will remain high until the second week of May, where they should stabilize for the summer months.

### GRAPEFRUIT

- California fruit has arrived and we still have some Israeli fruit too! Florida is done for the season.

### STRAWBERRIES

- Good availability out of California. We expect good quality and large volume into May.

### BLUEBERRIES

- We have transitioned from Chile to Florida and will have different pack sizes available (4oz, 6oz, and pints). Fruit is very nice in quality. This deal will continue throughout May until Carolina starts.

### BLACKBERRIES & RASPBERRIES

- The market remains very tight with limited availability for the next 1-2 weeks.

## *Vegetable Updates*

### BROCCOLI

- Broccoli continues to see good pricing and availability. Promotional pricing will be available for the next few weeks.

### CAULIFLOWER

- Good supplies are coming out of California and promotional pricing is available.



### CELERY

- The celery market has come off and pricing is promotable; ask your sales person for opportunities!

### ZUCCHINI

- Zucchini is very limited out of Mexico, Georgia and Florida; quality is only fair due to weather issues.

### CORN

- Spring production is in full swing out of Florida and prices have come off with an increase in volume. Promote!

### EGGPLANT

- Good supplies out of Mexico and Florida and we are seeing promotional pricing.

### ASPARAGUS

- Mexico is winding down and the quality will only be fair moving forward. Supplies will remain steady next week.

### CABBAGE

- Local cabbage is still available in good supply.

### PEPPERS

- Spring production is in full swing and we have good supply of Jumbo green peppers out of Florida; promote next week. Ontario hothouse peppers are seeing good availability and attractive pricing; promote!

### ONIONS

- New crop Mexican jumbo and colossal Spanish Onions will be available this week. Ontario onions are winding down with a few weeks remaining.

### CARROTS

- Local carrots are winding down, with about 1-2 weeks remaining. We will transition to US or Mexican product at that time.

### POTATOES

- Florida potatoes are tight as some of our major growers are done for the season. We will transition to California product by the first or second week of May.

### LETTUCES

- The market is strong on Iceberg lettuce as we transition growing regions in California. Leaf, Romaine and Hearts have come off very slightly.

## *Tomato & Salad Commodities*

### FIELD TOMATOES

- There is an abundance of Florida tomatoes and the market is very soft. Quality is very good; promote!

### GREENHOUSE TOMATOES

- Both the beef tomatoes and the cluster have come down slightly. Product is good and supplies look to be stable for the foreseeable future.

### ROMA TOMATOES

- Good volume on tomatoes out of Mexico. Quality is good with promotional pricing available.

### GRAPE TOMATOES

- Ontario grape tomatoes are in full swing with lots of availability on all colours including red and yellow grape, medley, and brown.



### CUCUMBERS

- Cucumbers have tightened up slightly and we saw slight increases in all sizes. That said, this market will be fairly stable and product is abundant. Minis are starting to really come on.

## *Price Increase Update – Menu Brand*

<i>Salt Pouch (6 x 1000 u)</i>	Effective June 1
<i>Pepper Pouch (6 x 1000 u)</i>	Effective June 1
<i>Ketchup Tomato Vol Pack (1 x 11.5 L)</i>	Effective June 1
<i>Sauce Sweet/Sour Port (100 x 28 g)</i>	Effective June 1
<i>Sauce BBQ Port (100 x 28 g)</i>	Effective June 1